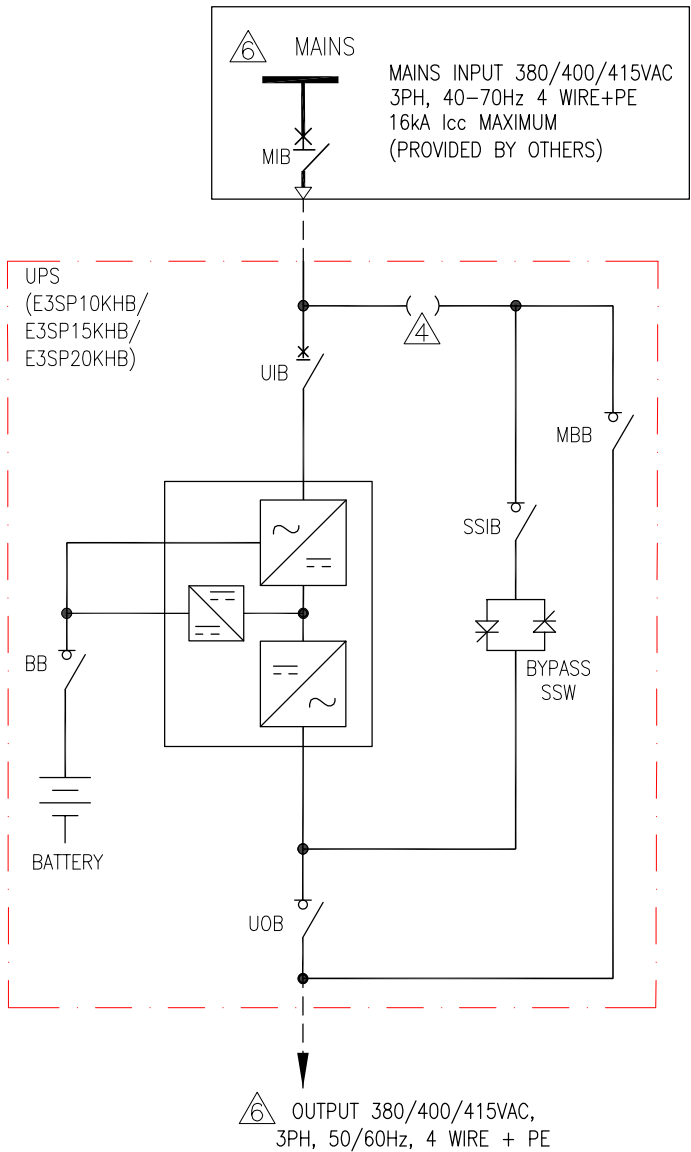
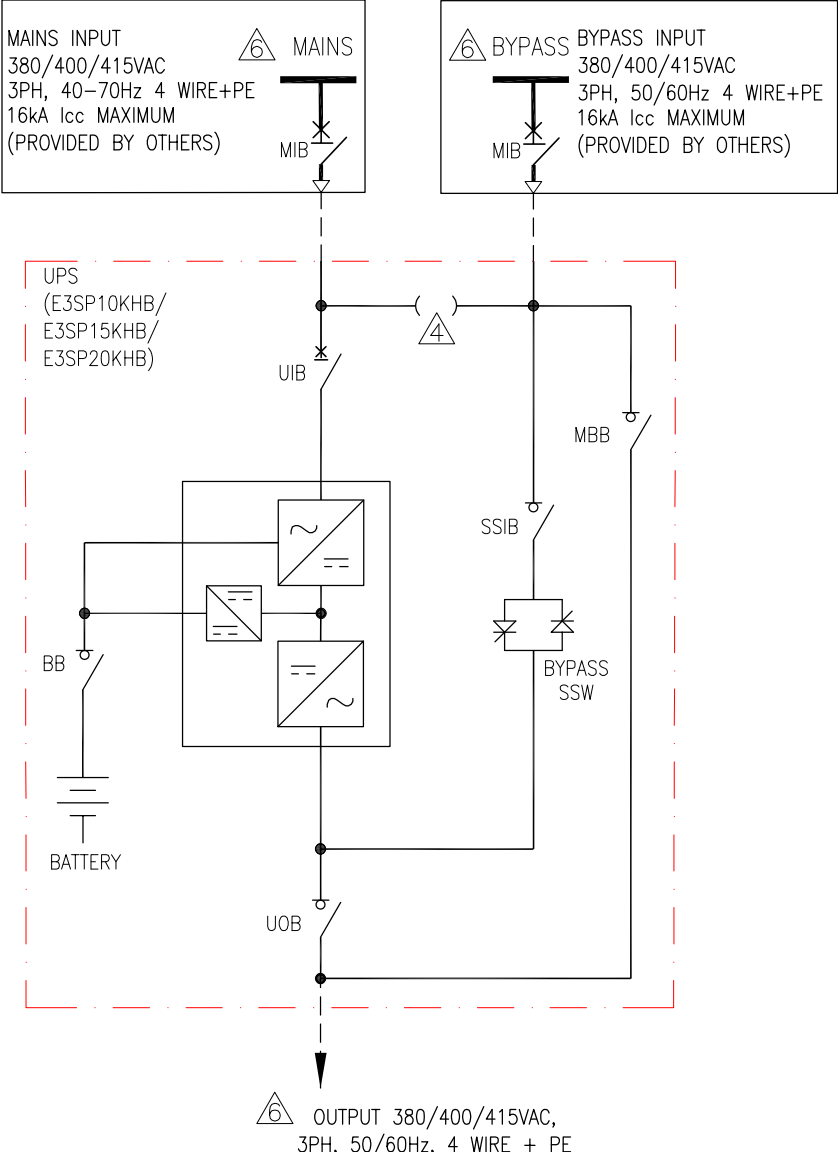


SINGLE MAINS CONFIGURATION



DUAL MAINS CONFIGURATION



NOTE: BOTH MAINS SOURCE AND BYPASS SOURCE SHOULD SHARE THE SAME NEUTRAL AND PE.

LEGEND: ----- CABLE PROVIDED BY OTHERS

- NOTES:
1. INSTALLATION SHALL COMPLY WITH ALL APPLICABLE NATIONAL AND LOCAL ELECTRICAL REGULATIONS.
  2. REFER TO PRODUCT DOCUMENTATION FOR ADDITIONAL DETAILS PRIOR TO INSTALLATION AND SITE PREPARATION WORK
  3. DRAWING DEPICTS POWER SYSTEM CONNECTIONS AND IS NOT REPRESENTATIVE OF PHYSICAL LAYOUT.
  4. SINGLE MAINS CONFIGURATION IS DEFAULT.
  5. FOR DUAL MAINS CONFIGURATION REMOVE THE 4 SHORTING JUMPERS.
  6. UP TO 4 UPS CAN BE CONNECTED IN PARALLEL.
  7. REFER TO SHEET-4 FOR ELECTRICAL DATA.
  8. CABLE LUGS ARE PROVIDED BY OTHERS. OPTIONAL KIT E3SPOPT002 CAN BE ORDERED FOR 10-20KVA CABLE LUGS.

THIS DRAWING AND SPECIFICATIONS HEREIN ARE THE PROPERTY OF SCHNEIDER ELECTRIC AND SHALL NOT BE COPIED, REPRODUCED OR USED IN WHOLE OR IN PART, AS THE BASIS FOR THE MANUFACTURE OR SALE OF ITEMS WITHOUT WRITTEN PERMISSION FROM SCHNEIDER ELECTRIC. THIS DRAWING IS BASED UPON LATEST AVAILABLE INFORMATION AND IS SUBJECT TO CHANGE WITHOUT NOTICE.

Schneider Electric

TITLE:  
EASY UPS 3S PRO  
10 - 20kVA, 400V, 3PH  
FOR INTERNAL BATTERIES  
SYSTEM ONLINE DIAGRAM-1 UPS

PROJECT: SUBMITTAL DRAWINGS SHEET 1 OF 4

DWG NO: E3SP10K20HB-SD

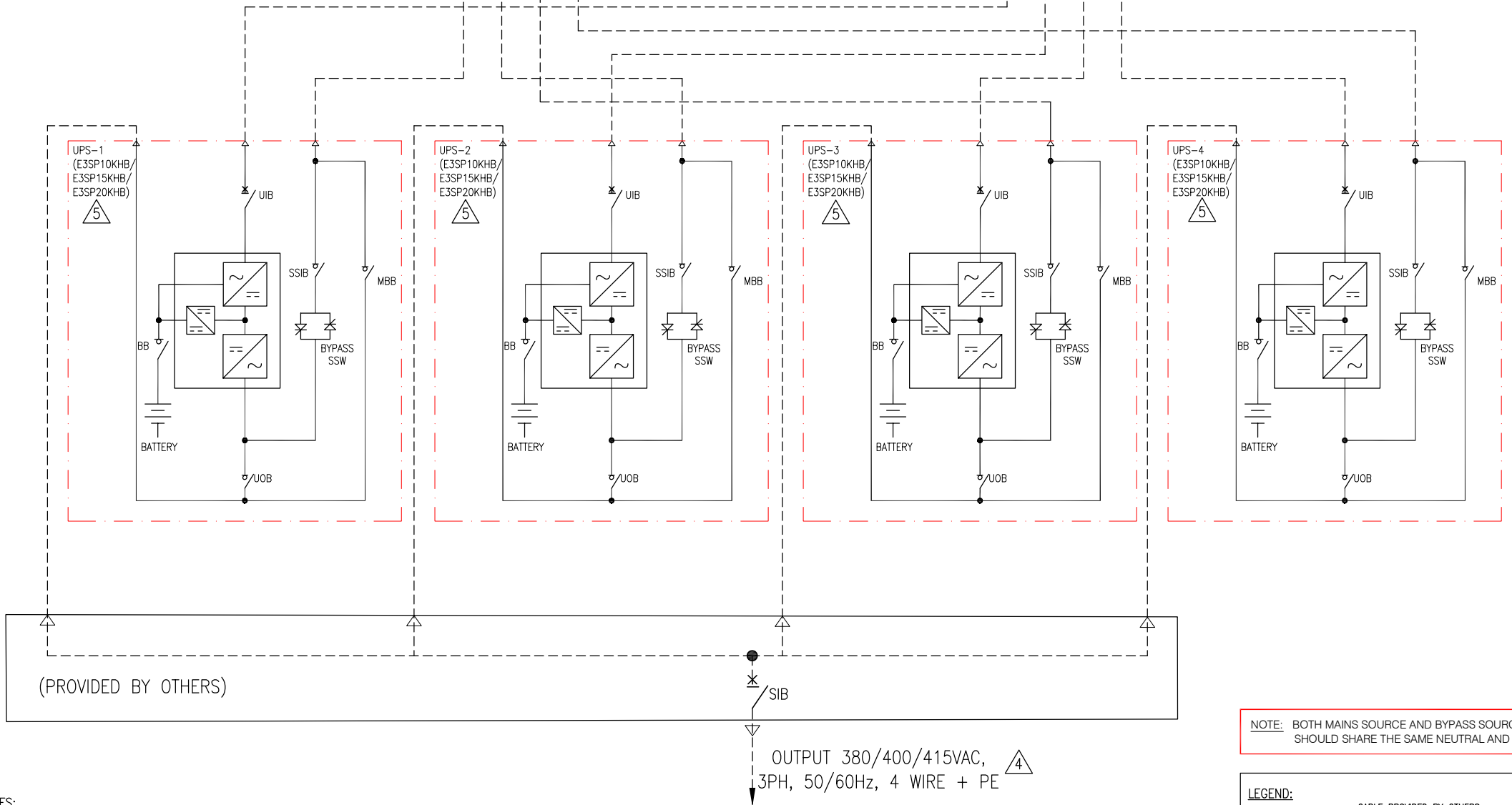
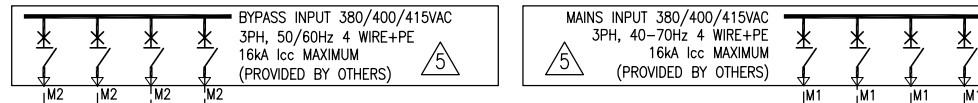
DRAWN: TRASSIA 18-SEP-25  
ENGINEER: YAPING YANG 18-SEP-25  
APPROVED: DAVE DONG 18-SEP-25

REV. 0  
FIRST ANGLE PROJECTION


**MAINS INPUT 380/400/415VAC**  
**3PH, 40-70Hz 4 WIRE+PE**  
**16kA lcc MAXIMUM**  
**(PROVIDED BY OTHERS)**



# 4 UPS IN PARALLEL – DUAL MAINS



**NOTE:** BOTH MAINS SOURCE AND BYPASS SOURCE SHOULD SHARE THE SAME NEUTRAL AND PE.

**LEGEND:** ----- CABLE PROVIDED BY OTHERS

- NOTES:**
1. INSTALLATION SHALL COMPLY WITH ALL APPLICABLE NATIONAL AND LOCAL ELECTRICAL REGULATIONS.
  2. REFER TO PRODUCT DOCUMENTATION FOR ADDITIONAL DETAILS PRIOR TO INSTALLATION AND SITE PREPARATION WORK
  3. DRAWING DEPICTS POWER SYSTEM CONNECTIONS AND IS NOT REPRESENTATIVE OF PHYSICAL LAYOUT.
  4. THE NUMBER OF OUTPUT WIRES MUST MATCH THE NUMBER OF INPUT WIRES IN SINGLE MAINS OR BYPASS WIRES FOR DUAL MAINS.
  5. REFER TO SHEET-4 FOR ELECTRICAL DATA.
  6. UP TO 4 UPS CAN BE CONNECTED IN PARALLEL.
  7. CABLE LUGS ARE PROVIDED BY OTHERS. OPTIONAL KIT E3SPOPT002 CAN BE ORDERED FOR 10-20KVA CABLE LUGS.

THIS DRAWING AND SPECIFICATIONS HEREIN ARE THE PROPERTY OF SCHNEIDER ELECTRIC AND SHALL NOT BE COPIED, REPRODUCED OR USED IN WHOLE OR IN PART, AS THE BASIS FOR THE MANUFACTURE OR SALE OF ITEMS WITHOUT WRITTEN PERMISSION FROM SCHNEIDER ELECTRIC. THIS DRAWING IS BASED UPON LATEST AVAILABLE INFORMATION AND IS SUBJECT TO CHANGE WITHOUT NOTICE.

**Schneider Electric**

**TITLE:**  
EASY UPS 3S PRO  
10 – 20KVA, 400V, 3PH  
FOR INTERNAL BATTERIES  
SYSTEM ONLINE DIAGRAM-4 UPS DUAL MAINS  
**PROJECT:** SUBMITTAL DRAWINGS **SHEET 3 OF 4**

**DWG NO:** E3SP10K20HB-SD **REV:** 0  
**DRAWN:** TRASSIA **18-SEP-25**  
**ENGINEER:** YAPING YANG **18-SEP-25**  
**APPROVED:** DAVE DONG **18-SEP-25**  
**FIRST ANGLE PROJECTION**

| ELECTRICAL DATA SHEET  |  |  |  |
|--|--|--|--|
| UPS RATING   | 10kVA  | 15kVA  | 20kVA  |
| INPUT SPECIFICATIONS   |  |  |  |
| INPUT VOLTAGE  | 380V/400V/415V   | 380V/400V/415V   | 380V/400V/415V   |
| NOMINAL INPUT CURRENT (A)                                    | 16/16/15   | 24/23/22   | 32/31/29   |
| MAXIMUM INPUT CURRENT (A)                                    | 21/20/19   | 31/29/28   | 41/39/38   |
| INPUT CURRENT LIMITATION (A)                                 | 21/20/19   | 31/29/28   | 41/39/38   |
| INPUT FREQUENCY  | 40-70Hz  |  |  |
| INPUT WIRING   | 3P+N+PE  |  |  |
| INPUT THDI   | < 3% @ Full linear load, < 4% @ Full non-linear load         |  |  |
| BYPASS SPECIFICATIONS  |  |  |  |
| BYPASS VOLTAGE   | 380V/400V/415V   | 380V/400V/415V   | 380V/400V/415V   |
| MINIMUM BYPASS VOLTAGE                                       | 342/360/373  | 342/360/373  | 342/360/373  |
| MAXMUM BYPASS VOLTAGE  | 418/440/457  | 418/440/457  | 418/440/457  |
| NOMINAL BYPASS CURRENT (A)                                   | 16/15/15   | 24/22/22   | 31/30/29   |
| BYPASS FREQUENCY   | 50/60Hz  |  |  |
| BYPASS WIRING  | 3P+N+PE  |  |  |
| OUTPUT SPECIFICATIONS  |  |  |  |
| OUTPUT VOLTAGE   | 380V/400V/415V   | 380V/400V/415V   | 380V/400V/415V   |
| NOMINAL OUTPUT CURRENT (A)                                   | 16/15/14   | 23/22/21   | 31/29/28   |
| OUTPUT FREQUENCY   | 50/60 Hz bypass synchronized; 50/60 Hz ±0.1% free running    |  |  |
| OUTPUT WIRING  | 3P+N+PE  |  |  |
| OUTPUT THDU  | <1% for 100% balanced linear load, < 5% for non-linear load  |  |  |
| BATTERY SPECIFICATIONS                                       |  |  |  |
| CHARGING POWER   | Programmable from 1% to 30% of UPS capacity. Default is 10%. | Programmable from 1% to 26% of UPS capacity. Default is 10%. | Programmable from 1% to 20% of UPS capacity. Default is 10%. |
| MAXIMUM CHARGING POWER (W)                                   | 2000 @ 100% load, 3000 @ 0% Load                             | 3000 @ 100% load, 3900 @ 0% Load                             | 4000 @ 100% load, 4000 @ 0% Load                             |
| NUMBER OF BATTERY BLOCKS                                     | 40 Blocks  |  |  |
| NOMINAL BATTERY VOLTAGE (VDC)                                | 480  |  |  |
| NOMINAL FLOAT VOLTAGE (VDC)                                  | 545  |  |  |
| END OF DISCHARGE VOLTAGE (FULL LOAD) (VDC)                   | 384  |  |  |
| END OF DISCHARGE VOLTAGE (NO LOAD) (VDC)                     | 420  |  |  |
| BATTERY CURRENT AT FULL LOAD AND NOMINAL BATTERY VOLTAGE (A) | 22   | 33   | 44   |
| BATTERY CURRENT AT FULL LOAD AND MINIMUM BATTERY VOLTAGE (A) | 27   | 41   | 55   |
| RIPPLE CURRENT   | <5% C10  |  |  |
| MAXIMUM SHORT CIRCUIT WITHSTAND                              | Icc=16kA   |  |  |
| RECOMMENDED CABLE SIZES                                      |  |  |  |
| INPUT CABLE SIZE (mm2)                                       | 6  | 6  | 10   |
| BYPASS CABLE SIZE (mm2)                                      | 6  | 6  | 10   |
| OUTPUT CABLE SIZE (mm2)                                      | 6  | 6  | 10   |
| BATTERY INPUT CABLE SIZE (mm2)                               | 6  | 6  | 16   |
| PE CABLE SIZE (mm2)  | 6  | 6  | 16   |